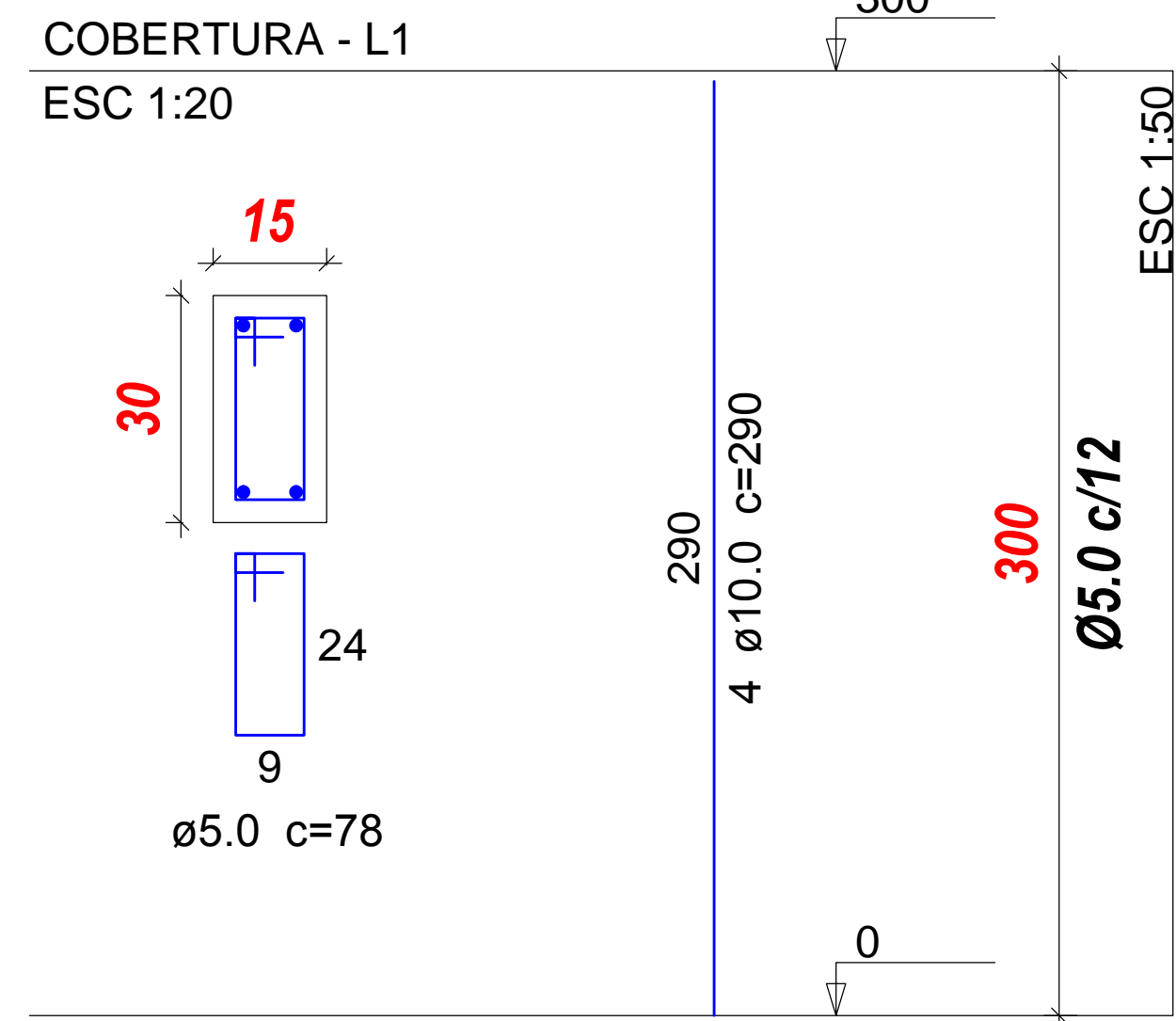
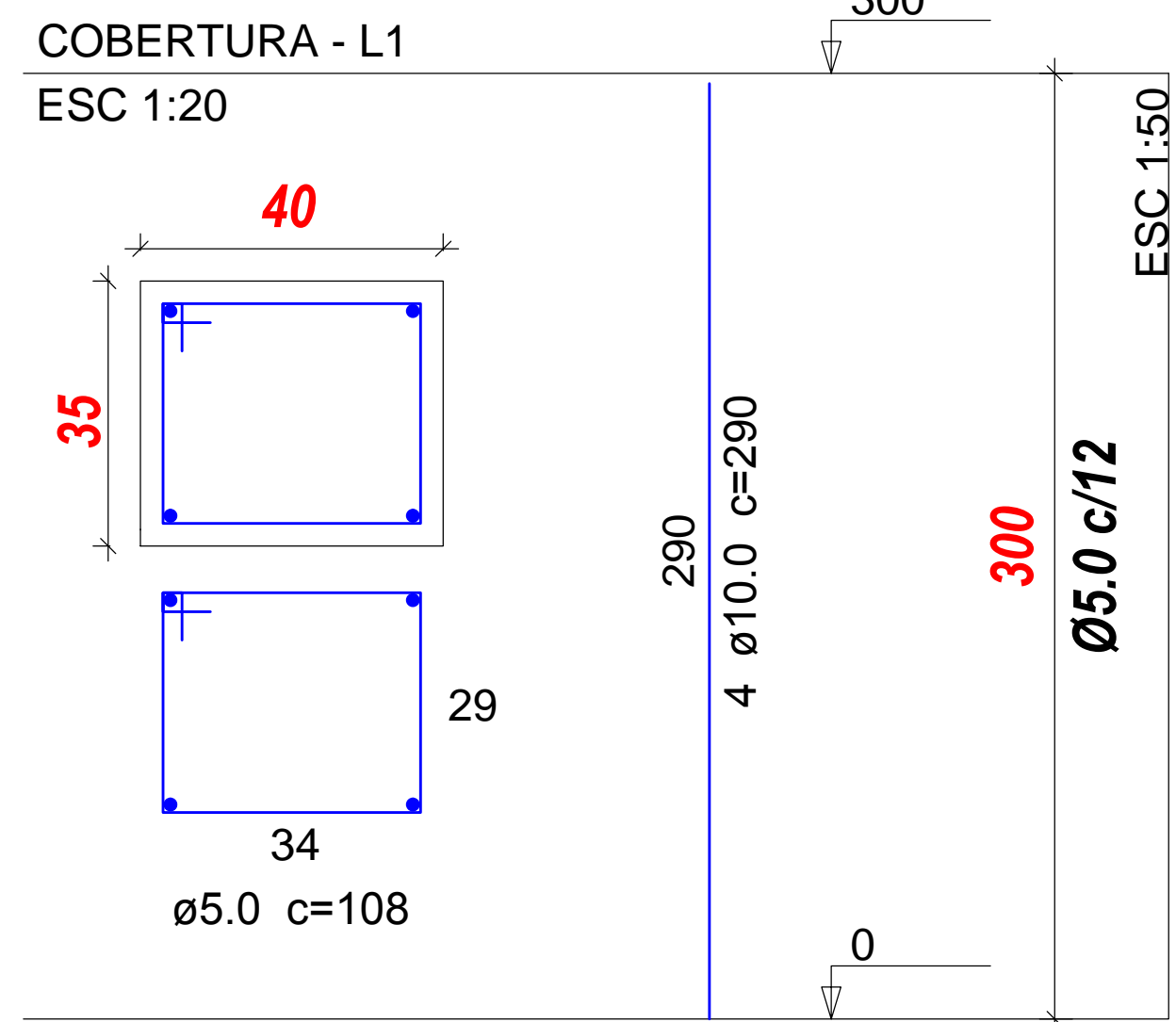


LOCAÇÃO DE PILARES
escala1:50

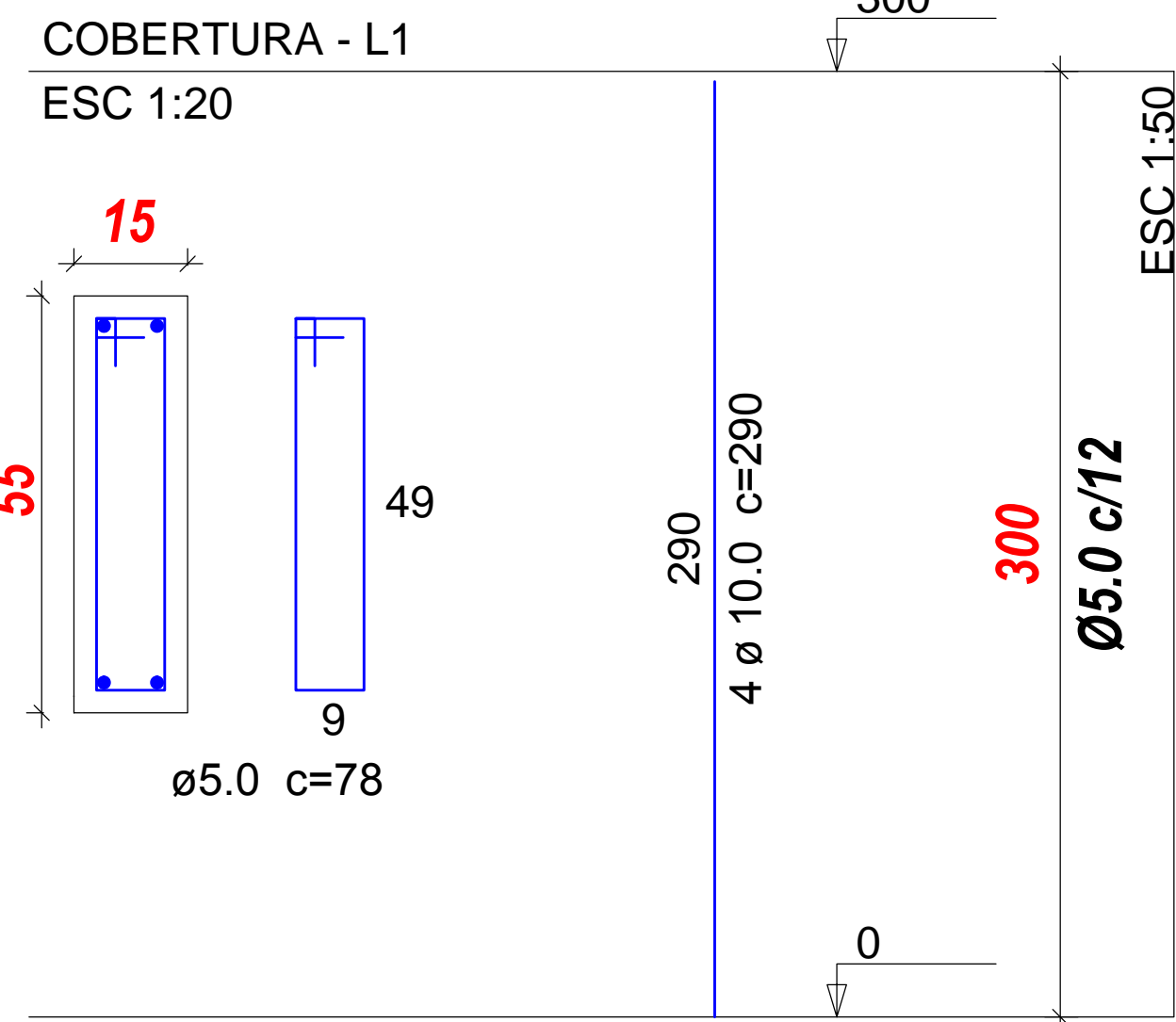
PILAR 1 (15X30)



PILAR 2 (35X40)



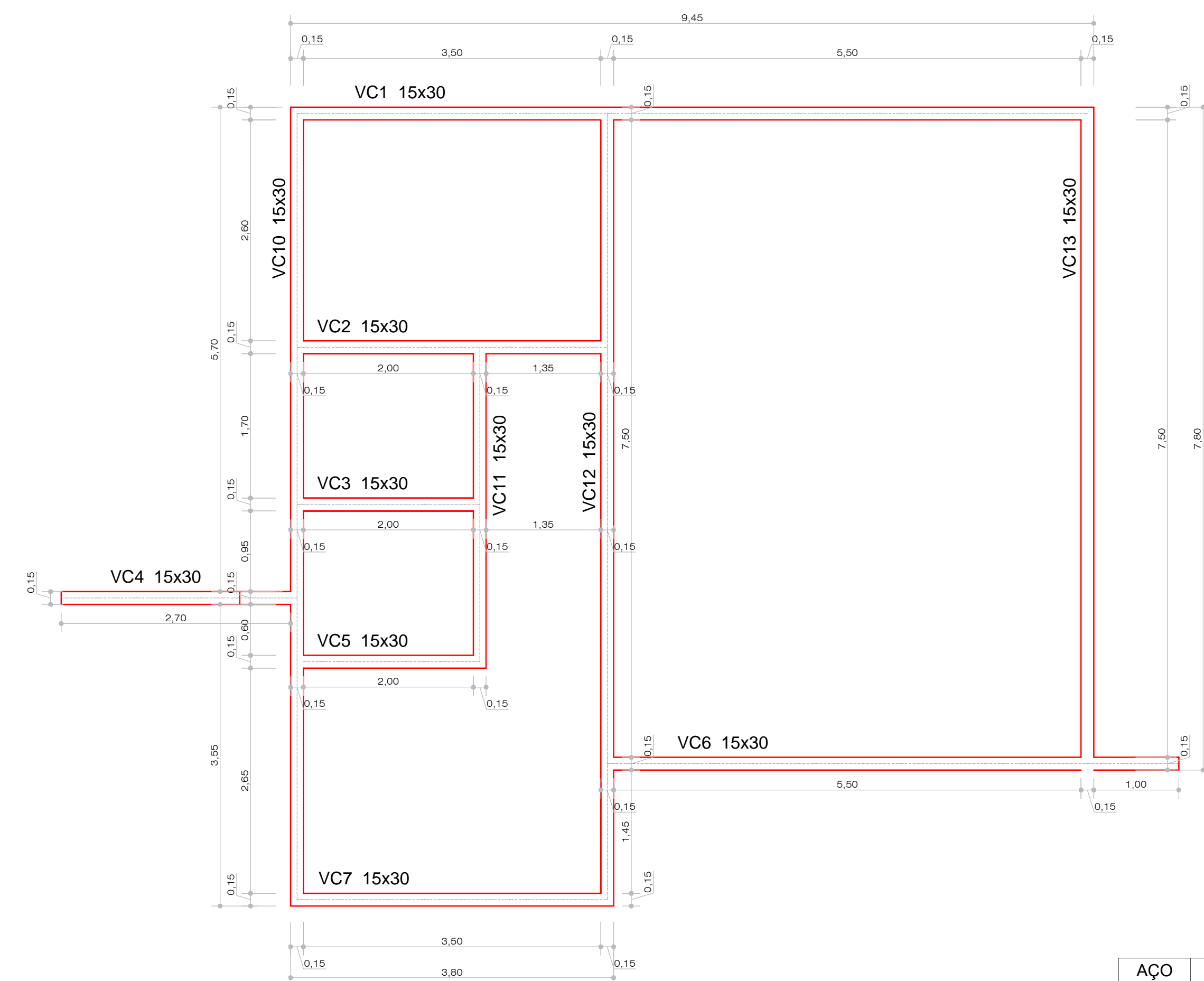
PILAR 3 (15X55)



Relação do aço Pilares					
AÇO	N	DIAM (mm)	QUANT (Barras)	UNIT (m)	C.TOTAL (m)
CA60	1	5.0	384	0.78	299.52
CA50	2	10.0	64	2.9	185.6

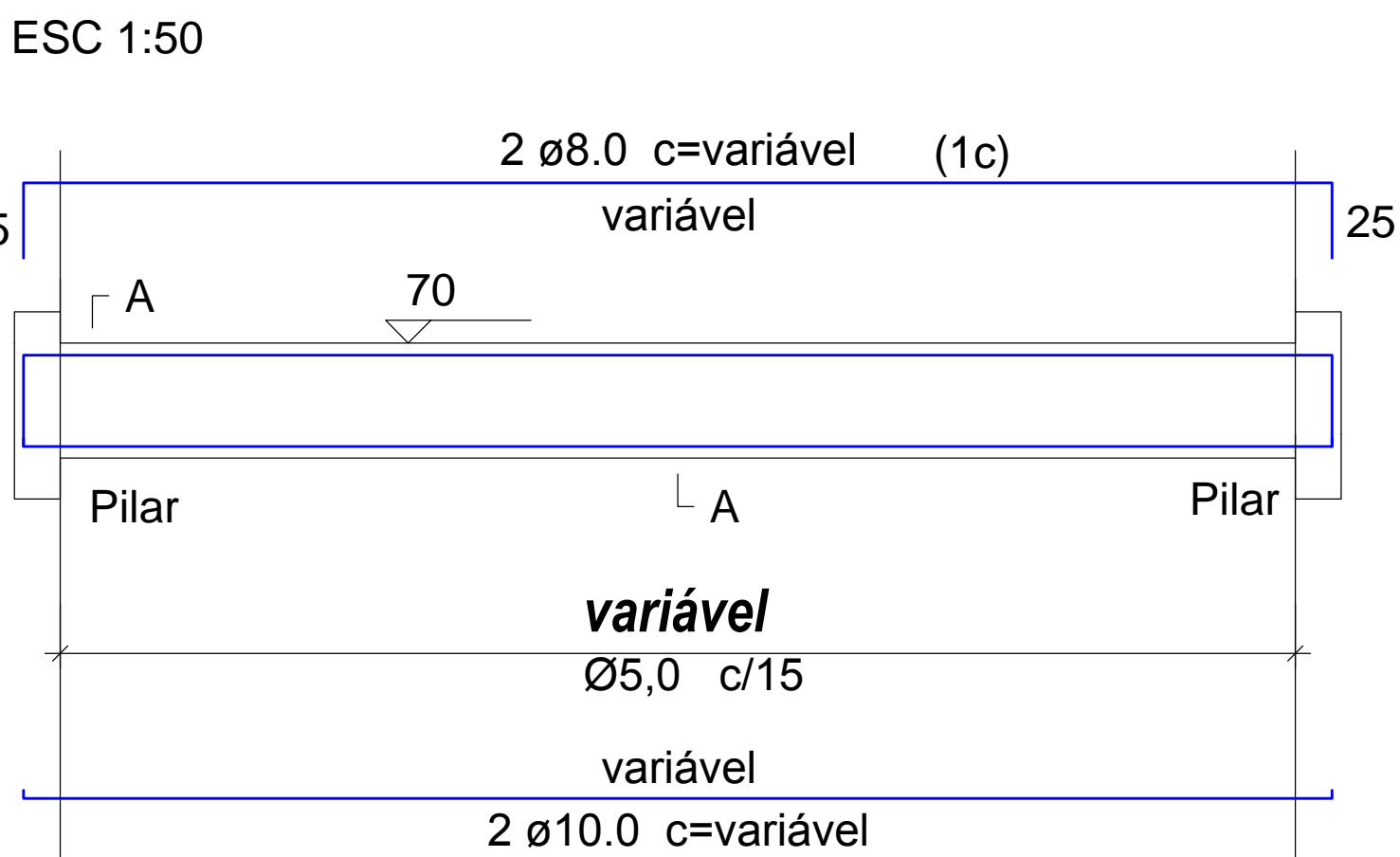
Resumo do aço				
AÇO	DIAM (mm)	C.TOTAL (m)	QUANT + 10 % (Barras)	PESO + 10 % (kg)
CA60	5.0	299.52	27	50.73
CA50	10.0	185.6	17	125.9
PESO TOTAL (kg)				
CA50	125.9			
CA60	50.73			

Volume de concreto = 2.39 m³
Área de forma = 46.5 m²



LOCAÇÃO DAS VIGAS CINTA
escala1:50

VC1 até VC13 (15 x 30)



SEÇÃO A-A
ESC 1:20

Relação do aço Viga Cinta					
AÇO	N	DIAM (mm)	QUANT (Barras)	UNIT (cm)	C.TOTAL (cm)
CA60	1	5.0	476.6	0.78	37180
CA50	2	10.0	4	59.35	237.80

Resumo do aço				
AÇO	DIAM (mm)	C.TOTAL (m)	QUANT + 10 % (Barras)	PESO + 10 % (kg)
CA60	5.0	371.8	34	62.98
CA50	10.0	237.80	26	161.09
PESO TOTAL (kg)				
CA50	161.09			
CA60	62.98			

Volume de concreto = 2.67 m³
Área de forma = 47.19 m²

